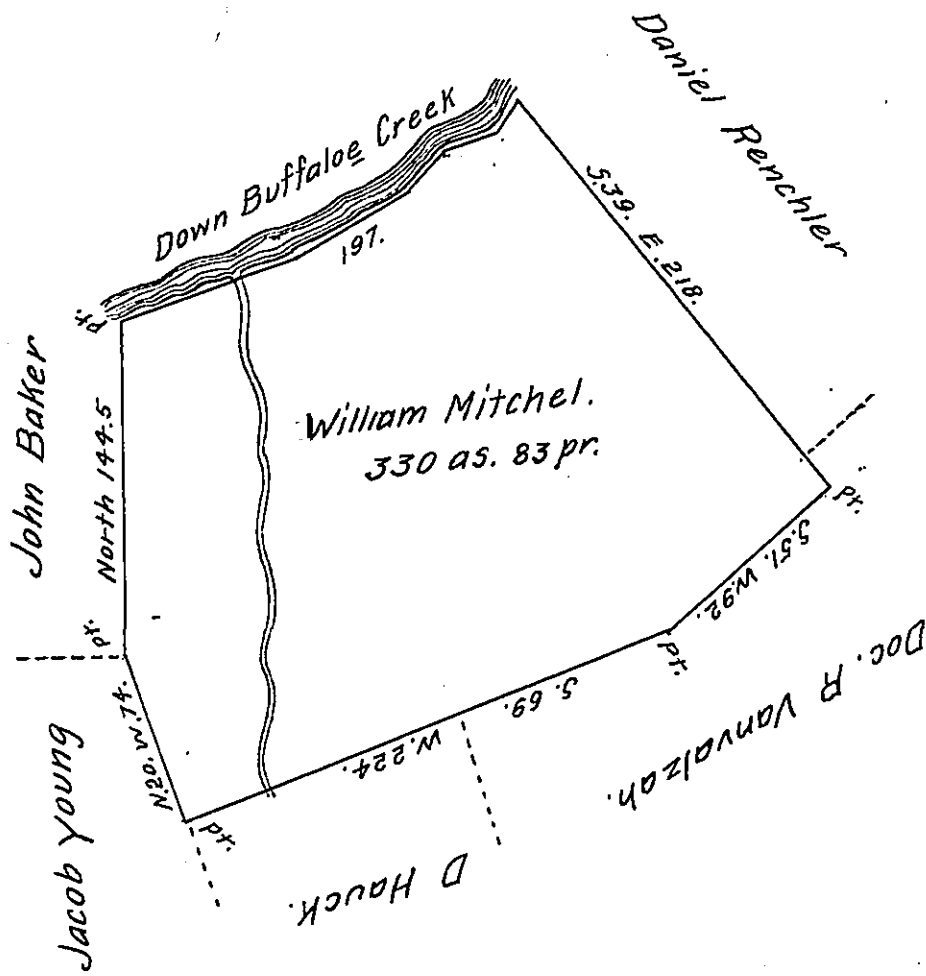


Cor & Distances
down Buffalo Creek

- N.70. E.76.
- N.60. E.58.
- N.93. E.24.
- N.76. E.18.
- N.39. E.21.
- 197



Situate in Buffalo township Union [late Berks] County. Surveyed the 6th. day of November 1832 by virtue of an order of survey dated the 3d. day of April 1769. No. 2221. granted to William Mitchel containing three hundred & thirty acres with the usual allowance &c.

Note. The same tract of land was surveyed the 5th. day of August 1769. for Henry Sees in pursuance of his order of survey dated the 3d. day of April 1769. No. 341. And now owned and occupied by John Bechtel in right of the said Henry Sees.

To Jacob Spangler Esqr. pr. Jno Hayes Con.
Surveyor General Penna.

IN TESTIMONY that the above is a copy of the original remaining on file in the Department of Internal Affairs of Pennsylvania, made conformably to an Act of Assembly approved the 16th day of February, 1833, I have hereunto set my Hand and caused the Seal of said Department to be affixed at Harrisburg, this eighth day of August 1908.

Henry Howard
Secretary of Internal Affairs.